

**Model: UT-883R**  
**USB RJ45 Console**  
**( RJ45 )**



----- 2

----- 2

----- 2

----- 2

-----

----- 3

----- 4

----- 4

----- 5-9

	PC		USB		PC		USB
				RS-232			
RS-232		PC	RS-232				
UT-883R			USB/RS-232			USB	RS-232
	USB		RS-232				
I/O							
UT-883R					300-460800bps		
USB	RS-232					PLC	PLAM
		MODEM	ISON				LED
	PDA						

1 RS-232C

RJ45(PIN)		RS-232C
1		RTS
2		DTR
3		SIN (RXD)
4		DCD
5		GND
6		SOUT(TXD)
7		DSR
8		CTS



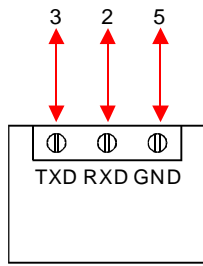
2 USB-A USB



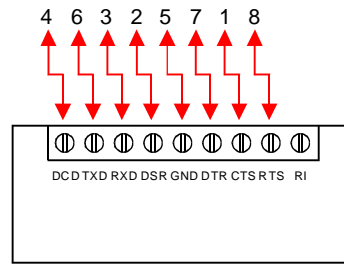
- 1 VCC
- 2 DATA-(DM)
- 3 DATA+(DP)
- 4 GND



1 RTS 2 DTR 3 TXD 4 DCD 5 GND 6 RXD 7 DSR 8 CTS



RS-232



RS-232

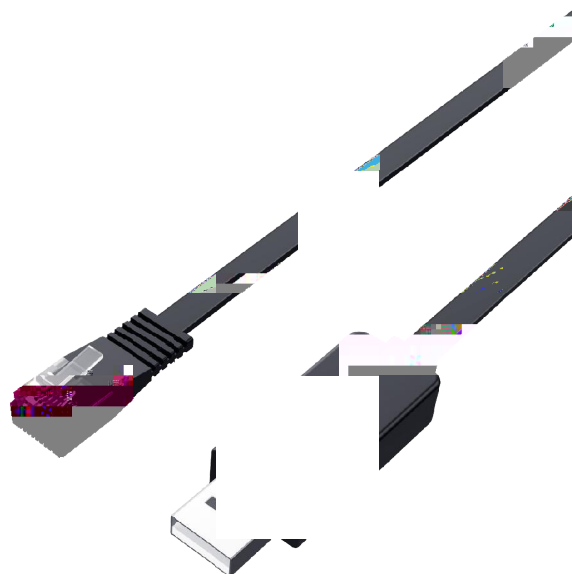


1

- A USB
- B RS-232
- C
- D

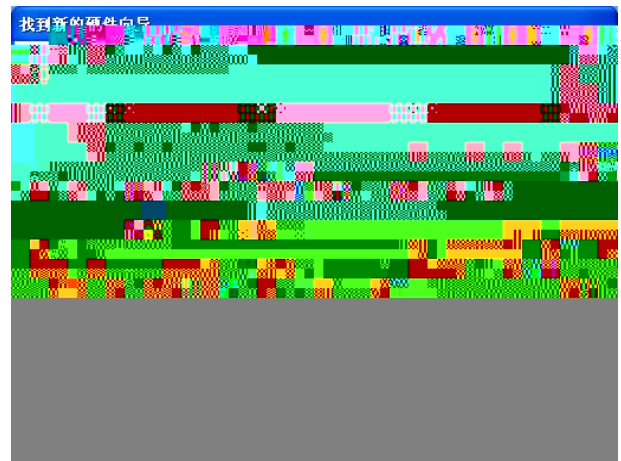
2

- A



( ) UT-883R

[

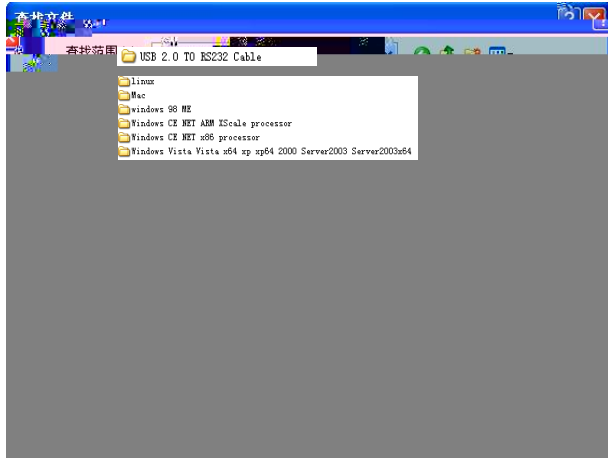




windows xp

Windows Vista Vista x64 xp xp64 2000 Server2003

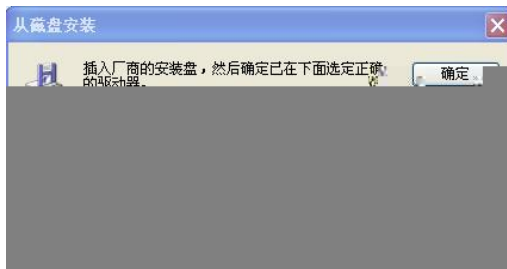
Server2003x64)



FTDIBUS.INF

FTDIBUS

( )





# USB Serial Converter



Serial Prot

USB Serial Converter

USB

Serial Converter

USB Serial Port

USB



## USB Serial Port

